

Twisco

SLT 415B



- Lift Capacity: 3,000 lb.
- Maximum Lift Height: 13 ft.
- Maximum Forward Reach: 7 ft. 10 in.
- Hydrostatic Transmission
- Perkins 52 HP Engine
- Compact: 65.5 in. wide
- Turning Radius: 88 in.

Shown with optional auxiliary hydraulics
and front and rear glass with wipers

 **MANITOU**

SLT 415B



Lift Capacity:

Maximum (24 in. load center)3,000 lb.



Lift Height:

Maximum lift height13 ft.

Maximum forward reach7 ft. 10 in.

Maximum below grade reach24 in.



Tires:

.....10 x 16.5 10PR SKS



Forks:

Length42 in.

Thickness/width1.375 in. x 4 in.

Carriage tilt98°



Brakes:

Service (pedal)Hydrostatic

Parking brakeNegative disc with electrical control



Engine:

TypePerkins 404C-22

Displacement4 cyl. 135 cu. in.

Horsepower (@3000 rpm)52 HP

Maximum Torque (@1800 rpm)105 ft.lb.

InjectionDirect

CoolingWater



Transmission:

TypeHydrostatic

Electro-hydraulic reversing shift

Speeds forward/reverse1/1



Hydraulics:

PumpGear type

Flow3,600 PSI - 11 gpm

Flow divider with priority to steering and braking



Capacities:

Cooling system2 gal.

Engine oil2.5 gal.

Hydraulic oil11.5 gal.

Fuel tank18.5 gal.



Specifications:

Weight (base unit)5,236 lb.

Turning radius (outside wheels)88 in.

Overall height75 in.

Overall width65.5 in.

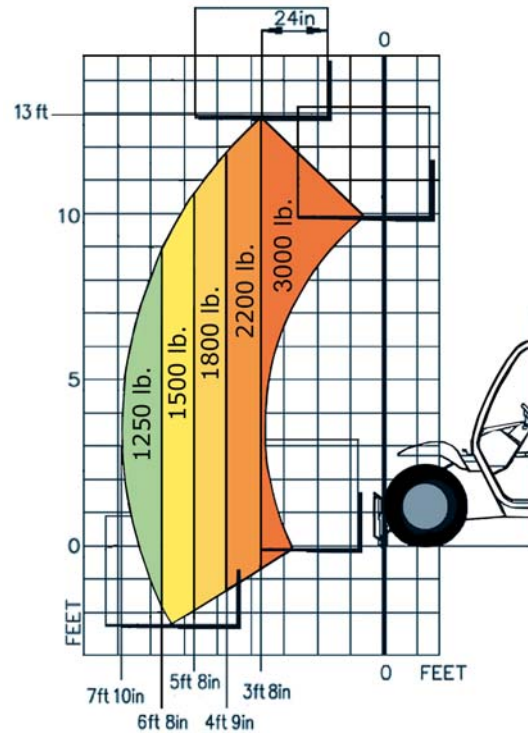
Overall length (without forks)124 in.

Ground clearance10 in.

Maximum drawbar pull4,250 lbf.

LOAD CAPACITY CHART

CALCULATED WITH CARRIAGE AND 42" FORKS
(OPTIONAL ATTACHMENTS CAN DERATE THIS CHART)



Capacities shown in pounds/feet are the maximum recommended load limits at the indicated extensions of the boom. Capacity ratings are based on a 48" homogeneous cube and are in accordance with ANSI/ASME B56.6 stability standards. Capacity reductions must be made for extended load centers and when used with various other attachments, contact MANITOU NORTH AMERICA, INC.

DIMENSIONS:

A.....43	O.....44
B.....79	P ₂33°
C.....26	P ₃64°
C ₁80	R.....88
D.....124	S.....181
E.....168	T.....107
F.....55	U.....75
G.....6	V.....111.5
G ₁10	V ₁6
H.....29.5	V ₂94
I.....153	W.....65
J.....29.5	Y.....116°
K.....36	Y ₁39°
L.....1.5	Z.....11°
M.....24	Z ₁87°
N.....51	

STANDARD EQUIPMENT:

- 3 Wheel Hydrostatic Drive
- Telescopic Boom Design
- Full Visibility
- Ergonomic Operator's Compartment
- Full Instrumentation
- JSM Joystick Control
- Back up Alarm

OPTIONAL EQUIPMENT:

- A wide variety of attachments and options are available to meet the customer's individual applications

