

# MANISCOPIC

# MVT 665

Turbo



- Lift Capacity: 14,300 lb.
- Maximum Lift Height: 19 ft.
- Maximum Forward Reach: 12 ft. 2 in.
- Perkins 101 HP Engine
- Two Speed Hydrostatic Transmission
- Load Sensing Hydraulics
- Four Wheel Drive
- Three Steering Modes



# MANITOU

# MVT 665T



## Lift Capacity:

Maximum (24 in. load center) .....14,300 lb.  
Break out force on bucket teeth  
with tilting ram (ISO 8313) .....15,700 lb.



## Lift Height:

Maximum lift height.....19 ft.  
Maximum forward reach .....12 ft. 2 in.  
Times: unladen / loaded (in sec)  
Lifting .....7.8/8.2  
Lowering .....5.6/5.0  
Boom extension.....8.0/8.2  
Boom retraction.....5.0/6.0



## Tires:

.....18 x 22.5 16PR



## Forks:

Length.....60 in.  
Thickness/width .....2.75 in. x 6 in.  
Carriage rotation .....135°



## Brakes:

.....Multidisc - hydraulically assisted on four wheels



## Engine:

Type.....Perkins 1104C.44 Turbo  
Displacement.....4 cyl. 268 cu. in.  
Power .....101 HP/74.5 kw  
Maximum Torque .....296 ft.lb. at 1400 rpm  
Injection.....Direct  
Cooling .....Water



## Transmission:

Type .....Hydrostatic  
Electro-hydraulic reversing shift  
Speeds forward/reverse .....2/2  
Maximum travel speed .....15.5 mph



## Hydraulics:

Pump .....Variable Disp. Piston Type  
Flow .....3900 PSI - 34 gpm  
Flow divider with priority to steering and braking



## Capacities:

Cooling system .....4.2 gal.  
Engine oil .....2.1 gal.  
Hydraulic oil .....29 gal.  
Fuel tank.....26.4 gal.

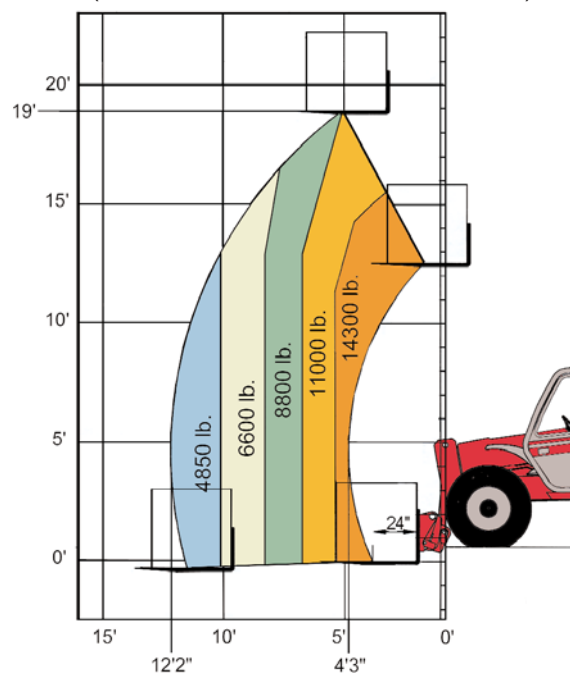


## Specifications:

Weight (base unit) .....23,717 lb.  
Turning radius (outside wheels).....140 in.  
Overall height.....99 in.  
Overall width.....96 in.  
Overall length (without forks) .....184 in.  
Ground clearance.....16 in.  
Maximum drawbar pull .....24,500 lbf.

## LOAD CAPACITY CHART

CALCULATED WITH 48" CARRIAGE AND 48" FORKS  
(OPTIONAL ATTACHMENTS CAN DERATE THIS CHART)



Capacities shown in pounds/feet are the maximum recommended load limits at the indicated extensions of the boom. Capacity ratings are based on a 48" homogeneous cube and are in accordance with ANSI/ASME B56.6 stability standards. Capacity reductions must be made for extended load centers and when used with various other attachments, contact MANITOU NORTH AMERICA, INC.

## DIMENSIONS:

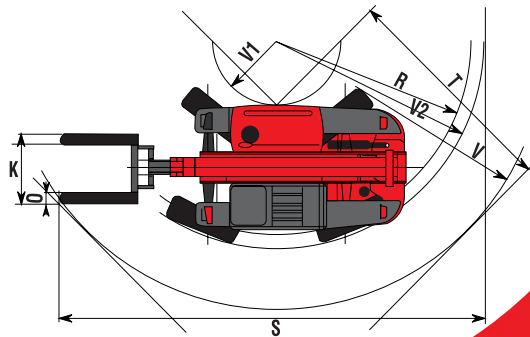
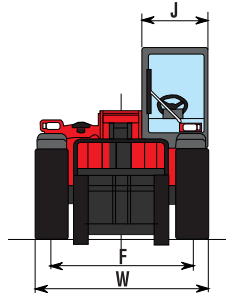
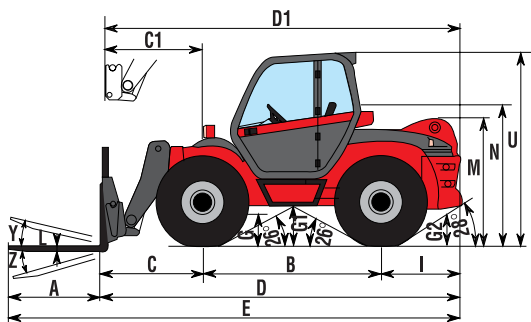
A.....60	L.....2.75
B.....98	M.....73
C.....40	N.....68
C1.....34	O.....6
D.....184	R.....132
D1.....178	S.....277
E.....231	T.....156
F.....78	U.....99
G.....16	V.....175
G1.....19	V1.....37
G2.....16	V2.....140
I.....46	W.....96
J.....34	Y.....11°
K.....56	Z.....124°

## STANDARD EQUIPMENT:

- Enclosed Cab
- Hydraulic Power Steering
- Three Steering Modes
- Full Time 4 Wheel Drive
- Limited Slip Front Axle
- Three Gear Outer Planetary Hubs
- Adjustable Seat
- Full Instrumentation
- Road Lights
- Horn
- Backup Alarm
- Inboard Wet Disc Brakes
- Parking Brake
- Quick Fit Tool System
- Automatic Attachment Leveling
- Hydraulic Lock-out Valves
- Auxiliary Boom Hydraulics
- Left & Right Side Mirrors
- Neutral Start Switch
- Tow Pin

## OPTIONAL EQUIPMENT:

- A wide variety of attachments and options are available to meet the customer's individual applications



This publication in no way constitutes an offer and the company reserves the right to alter specification without prior notice. The MANITOU models presented in this brochure can be supplied complete with optional equipment attachments.

2/15/06 Printed in U.S.A.

MANITOU NORTH AMERICA, INC.  
P.O. Box 21386  
Waco, TX 76702-1386  
Tel: 800-433-3304 Fax: 254-799-4433  
www.manitou-na.com

