

MANISCOPIC

MT 6034

Turbo or XTurbo



- Lift Capacity: 6,000 lb.
- Maximum Lift Height: 34 ft. 3 in.
- Maximum Forward Reach: 23 ft. 3 in.
- John Deere 99 HP or 115 HP Engine
- 3 Speed Power Shift
- Four Wheel Drive
- Three Steering Modes
- Frame Leveling

 **MANITOU**

MT 6034T/6034XT



Lift Capacity:

Maximum (24 in. load center)6,000 lb.
Capacity at maximum lift height4,000 lb.



Lift Height:

Maximum lift height.....34 ft. 3 in.
Maximum forward reach.....23 ft. 3 in.
Capacity at maximum forward reach....900 lb.
Maximum reach below grade24 in.



Tires:

.....15.00 X 19.5 12 Ply



Brakes:

Service ..oil immersed inboard hydraulic wet disc
Parking.....negative brake system



Engine:

Type ...John Deere 4045T Turbocharged Diesel
Displacement4 cyl. 276 cu. in.
Power (at 2500 rpm) - MT6034T99 HP/74 kw
Power (at 2500 rpm) - MT6034XT..115 HP/86 kw
InjectionDirect
CoolingWater



Transmission:

Type.....3-Speed Power Shift
Maximum travel speed20 mph



Hydraulics:

PumpSingle section gear type
Flow29 gpm



Capacities:

Cooling system.....4.3 gal.
Engine oil14 qt.
Transmission oil24 qt.
Hydraulic oil.....35 gal.
Fuel tank.....29 gal.

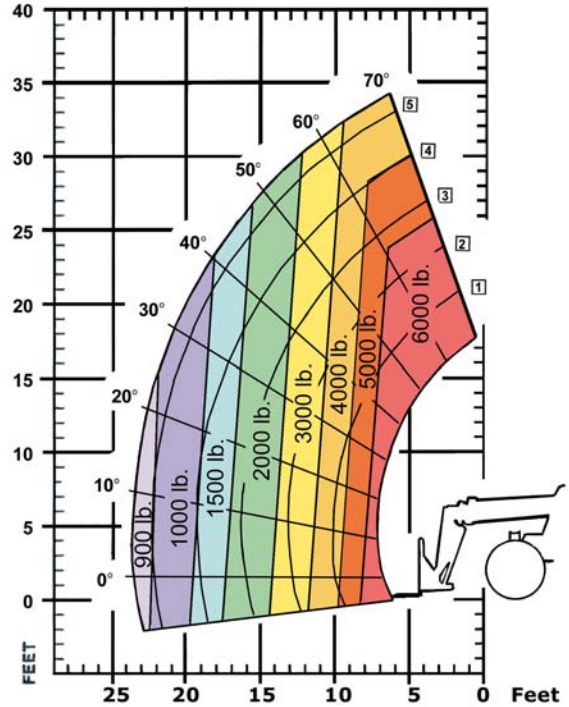


Specifications:

Weight (base unit)15,100 lb.
Overall height7 ft. 10 in.
Overall width7 ft. 10 in.
Overall length (without forks).....16 ft.
Ground clearance14 in.
Wheelbase9 ft. 2 in.
Turning radius (outside wheels).....12 ft. 6 in.
Frame Leveling10°/10°

LOAD CAPACITY CHART

CALCULATED WITH OPTIONAL 48" CARRIAGE AND FORKS
(OPTIONAL ATTACHMENTS CAN DERATE THIS CHART)



Capacities shown in pounds/feet are the maximum recommended load limits at the indicated extensions of the boom. Capacity ratings are based on a 48" homogeneous cube and are in accordance with ANSI/ASME B56.6 stability standards. Capacity reductions must be made for extended load centers and when used with various other attachments, contact MANITOU NORTH AMERICA, INC.

STANDARD EQUIPMENT:

- 3 Speed Forward /Reverse Powershift Transmission
- Planetary Axles with an Open Center Differential
- Full Time Four Wheel Drive
- Four Wheel Inboard Wet Disc Brakes
- Power Steering
- Selective Steering (Front Wheel, All Wheel, and Crab)
- Quick Carriage Release
- 10 Degree Frame Leveling (Left or Right)
- Automatic Self-Leveling Fork System
- Negative Parking Brake
- 12-Volt Electric System
- Engine Block Heater
- Boom Control Joystick
- Fork Tilt and Frame Level Joystick
- Cab - Rear and Right Hand Side Glass
- Vandalism Protection
- Reverse Warning Horn
- Brake Lights and Back Up Light
- Engine Temperature, Fuel And Hourmeter Gauges
- Right Side Mounted Rear View Mirror
- Left Hand Front Fender

OPTIONAL EQUIPMENT:

- A wide variety of attachments and options are available to meet the customer's individual applications

Dealer:



MANITOU NORTH AMERICA, INC. - P.O. Box 21386 - Waco, TX 76702-1386
Tel: 800-433-3304 - Fax: 254-799-4433 - www.manitou-na.com