

MANISCOPIC

MT 1033 H L Turbo

- Lift Capacity: 7,000 lb.
- Maximum Lift Height: 31 ft. 8 in.
- Maximum Forward Reach: 23 ft. 6 in.
- Perkins 100 HP Engine
- Hydrostatic Transmission
- Four Wheel Drive
- Three Steering Modes
- Frame Leveling



 **MANITOU**

MT 1033HL Turbo



Lift Capacity:

Maximum (24 in. load center)7,000 lb.
Break out force on bucket teeth
with tilting ram (ISO 8313)14,800 lb.



Lift Height:

Maximum lift height.....31 ft. 8 in.
Maximum forward reach.....23 ft. 6 in



Tires:

.....Goodyear 15.5 x 25 SGL



Forks:

Length.....48 in.
Thickness/width1.75 in. x 5 in.
Carriage rotation126°



Brakes:

...Hydraulic with oil immersed discs on front axle



Engine:

TypePerkins 1104C-44TA Turbo Diesel
Displacement.....4 cyl. 268 cu. in.
Power.....101 HP/74.6 kw
Maximum Torque291 ft.lb. at 1400 rpm
InjectionDirect
CoolingWater



Transmission:

TypeHydrostatic
Electro-hydraulic reversing shift
Speeds forward/reverse4/2
Maximum travel speed17 mph



Hydraulics:

PumpGear type
Flow3625 PSI - 28 gpm
Flow divider with priority to steering



Capacities:

Cooling system7 gal.
Engine oil2.9 gal.
Fuel tank31.7 gal.
Hydraulic fluid.....33 gal.

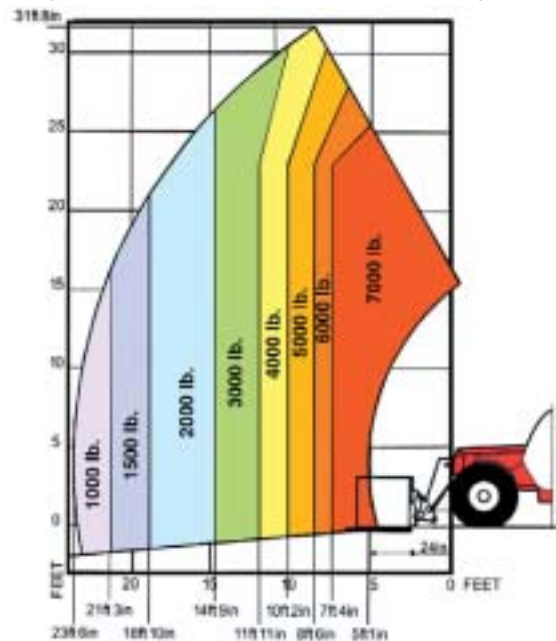


Specifications:

Weight (base unit)16,635 lb.
Turning radius (outside wheels).....153 in.
Overall height.....90 in.
Overall width89 in.
Overall length (without forks)242 in.
Ground clearance17 in.
Maximum drawbar pull.....18,434 lbf.

LOAD CAPACITY CHART

CALCULATED WITH 48" CARRIAGE AND FORKS
(OPTIONAL ATTACHMENTS CAN DERATE THIS CHART)



Capacities shown in pounds/feet are the maximum recommended load limits at the indicated extensions of the boom. Capacity ratings are based on a 48" homogeneous cube and are in accordance with ANSI/ASME B56.6 stability standards. Capacity reductions must be made for extended load centers and when used with various other attachments, contact MANITOU NORTH AMERICA, INC.

DIMENSIONS:

A48 K41
B110 L1.75
C55 N67
C₁51 O5
D195 P₂38°
D₁192 P₃53°
D₂164 R148
E243 S303
F73 T167
F₁73 U₁91
G18 U₂98
G₁17 V197
G₂17.5 V₁52
H10° V₂153
H₁10° W89
I30 Y12°
J34 Z134°

STANDARD EQUIPMENT:

- Enclosed Cab
- Hydraulic Power Steering
- Three Steering Modes
- Full Time 4 Wheel Drive
- Limited Slip Front Axle
- Gear Outer Planetary Hubs
- Adjustable Seat
- Full Instrumentation
- Road Lights
- Horn
- Backup Alarm
- Inboard Wet Disc Brakes
- Parking Brake
- Quick Fit Tool System
- Automatic Attachment Leveling
- Hydraulic Lock-out Valves
- Auxiliary Boom Hydraulics
- Left & Right Side Mirrors
- Front Windshield Wipers
- Neutral Start Switch
- Tow Pin

OPTIONAL EQUIPMENT:

- A wide variety of attachments and options are available to meet the customer's individual applications

