

MANISCOPIC

MLT 523

Turbo MU



- Lift Capacity: 5,000 lb.
- Maximum Lift Height: 16 ft. 2 in.
- Maximum Forward Reach: 9 ft. 7 in.
- Perkins 75 HP Engine
- Hydrostatic Transmission
- Four Wheel Drive
- Three Steering Modes
- Mono Ultra Joystick



MANITOU

MLT 523 Turbo MU



Lift Capacity:

Maximum (24 in. load center)5,000 lb.
 Tipping load at maximum reach.....3,384 lb.
 Break out force on bucket teeth
 with tilting ram (ISO 8313)10,516 lbf.



Lift Height:

Maximum lift height.....16 ft. 2 in.
 Maximum forward reach9 ft. 7 in.
 Times: unladen / loaded (in sec)
 Lifting6.0/6.7
 Lowering4.0/4.0
 Boom extension4.5/4.6
 Boom retraction3.0/2.4



Tires:

.....12.5/80 x 18 SGI 10PR



Brakes:

.....Hydraulic with oil immersed discs on front axle



Engine:

Perkins Diesel.....1103-C33 Turbo
 Horsepower.....75
 Displacement3 cyl. 164 cu.in.
 Maximum Torque215 lbf-ft at 1400 rpm
 InjectionDirect
 CoolingWater



Transmission:

TypeHydrostatic
 Electro-hydraulic reversing shift
 Speeds forward/reverse.....1/1
 Maximum travel speed17 mph



Hydraulics:

PumpGear type
 Flow3770 PSI - 24 gpm
 Flow divider with priority to steering and braking



Capacities:

Cooling system.....3.8 gal.
 Engine oil1.6 gal.
 Hydraulic fluid27 gal.
 Fuel tank27.5 gal.

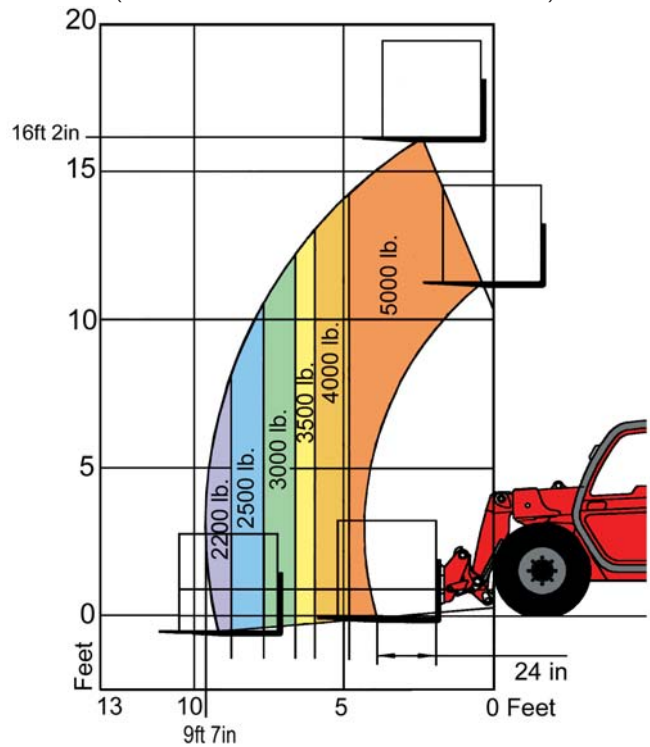


Specifications:

Weight (base unit)10,913 lb.
 Turning radius (outside wheels).....10 ft. 2 in.
 Overall height.....6 ft. 7 in.
 Overall width5 ft. 11 in.
 Overall length (without forks).....13 ft. 10 in.
 Ground clearance12 in.
 Maximum drawbar pull7,643 lbf.

LOAD CAPACITY CHART

CALCULATED WITH OPTIONAL 48" CARRIAGE AND 48" FORKS
 (OPTIONAL ATTACHMENTS CAN DERATE THIS CHART)



Capacities shown in pounds/feet are the maximum recommended load limits at the indicated extensions of the boom. Capacity ratings are based on a 48" homogeneous cube and are in accordance with ANSI/ASME B56.6 stability standards. Capacity reductions must be made for extended load centers and when used with various other attachments, contact MANITOU NORTH AMERICA, INC.

DIMENSIONS:

A*	L*
B87	N56
C43	O*
C ₁40	P ₂39°
D166	P ₃31°
D ₁163	R116
D ₂141	S255
E213	T128
F59	U ₁79
F ₁59	U ₂91
G12	V161
G ₁14	V ₁43
G ₂13	V ₂122
I36	W71
J34	Y12°
K*	Z120°

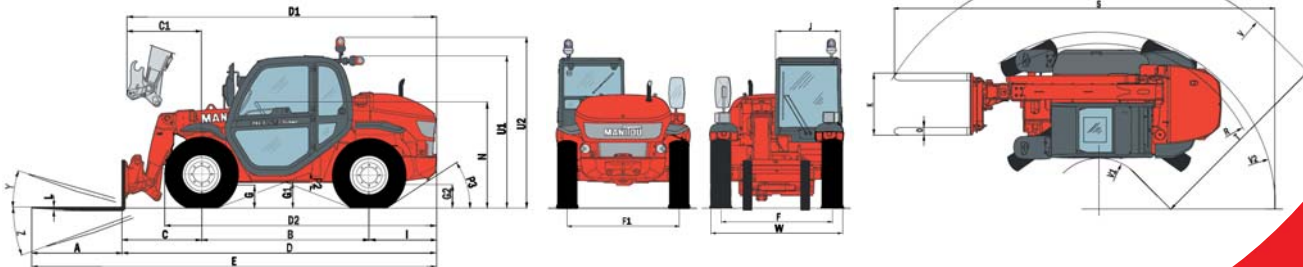
*varies with option

STANDARD EQUIPMENT:

- Enclosed Cab
- Hydraulic Power Steering
- Three Steering Modes
- Full Time 4 Wheel Drive
- Limited Slip Front Axle
- Outer Planetary Hubs
- Adjustable Seat
- Full Instrumentation
- Road Lights
- Sun Visor
- Horn
- Alternator
- Backup Alarm
- Inboard Wet Disc Brakes
- Parking Brake
- Quick Fit Tool System
- Automatic Attachment Leveling
- Auxiliary Boom Hydraulics
- Left & Right Side Mirrors
- Neutral Start Switch
- Tow Pin

OPTIONAL EQUIPMENT:

- A wide variety of attachments and options are available to meet the customer's individual applications



Dealer:



MANITOU NORTH AMERICA, INC. - P.O. Box 21386 - Waco, TX 76702-1386
 Tel: 800-433-3304 - Fax: 254-799-4433 - www.manitou-na.com